

Who am I ?

Wetland wildlife is under threat. Of those species that depend on wetlands like these at Slimbridge, 30% of amphibians, freshwater reptiles and mammals, and 15% of birds are globally threatened with extinction (disappearing for ever).

As you wander around WWT Slimbridge today try and work out who some of our endangered residents are. There is a clue and a fact about each one below their photo. Good luck!



CLUE: At Slimbridge I live in the Tundra exhibit.
FACT: In the 1940's there were only 300, now thanks to WWT, there are over 30,000.

Who am I? _____



CLUE: Find me near Puddleduck corner.
FACT: Total numbers for my species have dropped by 56% over the last 10 years

Who am I? _____



CLUE: I can be found opposite Greater flamingos.
FACT: Our numbers are increasing in areas where the European otter has made a return.

Who am I? _____



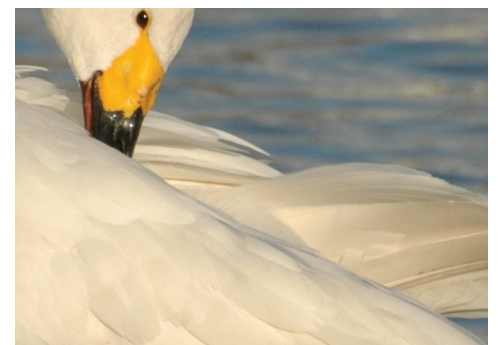
CLUE: My home is at Back from the Brink.
FACT: We were hunted to extinction in Britain by people who wanted our fur and meat.

Who am I? _____



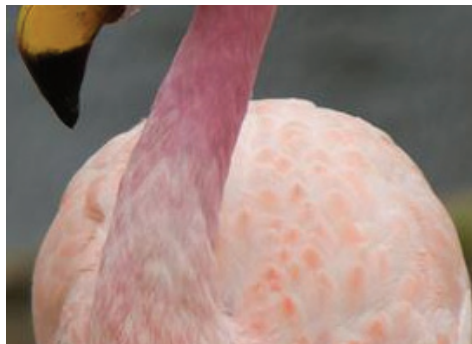
CLUE: I am the species that comes running up to you each time you are near me.
FACT: I am the world's rarest type of goose.

Who am I? _____



CLUE: We live with the Mute swans on Swan Lake.
FACT: Numbers of us visiting this country through the winter have dropped by 46% .

Who am I? _____



CLUE: I am the only one of my kind here at Slimbridge. I share my home with the Andeans.
FACT: We were thought to have been extinct until a small group of were discovered in 1956.

Who am I? _____



CLUE: We get fed twice a day with tasty fish.
FACT: Habitat loss and pollution in rivers are major threats to our survival.

Who am I? _____



CLUE: You can quite often hear me calling out.
FACT: 400 years ago we became extinct in the UK. We are making a comeback though thanks to WWT.

Who am I? _____