

IMMERSE YOURSELF IN THE WILD ON AN UNFORGETTABLE DAY OUT

Your **wetland adventure** awaits! Whether it's fun-packed family **exploration**, an escape from the urban bustle or a day of unrivalled wildlife watching that you're after – you can find it right here.

We've got 45 hectares of **wetlands, ponds, wildflower meadows** and **woodland** to discover. Within them you'll meet a breeding flock of pink **Chilean flamingos**, one of the UK's largest heronries, hundreds of colourful woodland birds and some of the most **endangered waterbirds** on the planet, bred and raised by us.

Add to that our **cheeky otters**, majestic **Eurasian cranes**, wading birds aplenty and some fascinating pond life and you've got a wild North East day out unlike any other.

WHAT'S GOING ON IN 2018?

Get set for 364 days of **discovery**. Whatever your age or interests, we've squeezed enough exciting events, activities and seasonal highlights into the year that there's always something new to see or do.

EGGS-TRA FUN AT EASTER

The amazing **Celebrity Dusty Duck*** trail is arriving this Easter with 14 giant celebrity designed Dusty Ducks, including Joanna Lumley's Patsy Dusty, Steve Backshall's Explorer Dusty and Chris Packham's Ziggy StarDusty. And there's the Easter weekend **Dusty's GIANT Duck Hunt**.

MAY HALF-TERM CHICKS

Bring your little ones to meet ours during daily talks at our specialist duckery. 'Aaaahs' at the ready.

SUMMER HOLIDAY DISCOVERY

Fascinating flamingo facts, pond exploring and wildlife watching – your **summer adventure** awaits.

PLUS, we've got loads of walks and talks, family crafts and special one-off events to enjoy throughout the year. Visit www.wwt.org.uk/washington-events for details.

*original Dusty Duck kindly created by the world-famous Aardman studios for WWT's 70th anniversary celebrations.



EVERYTHING YOU NEED FOR AN UNFORGETTABLE DAY OUT

WHERE WE ARE

FREE PARKING

- **our address** is Pattinson, Washington, Tyne and Wear, NE38 8LE.
- **By car** - we're off the A1M (J65 south bound/J64 north bound, follow A1231 Sunderland signs) or A19 (A1231 exit and Gateshead signs). Also signposted from the A195 and A182. Follow the brown duck signs to the centre – **quack!**
- **By bus** - we're down the lane from the Waterview Park stop. Visit www.simplygo.com for bus services.
- **By bike** - we're on the C2C cycle route.

WE'RE BUGGY AND WHEELCHAIR FRIENDLY

WHEN WE'RE OPEN

- **364 days a year** - that's every day except Christmas Day (but we still pop down and feed the animals!)
- Come along and see us from **9.30am** daily (closing **5.30pm** in summer, **4.30pm** in winter and **2pm** on Christmas Eve). Last admission is one hour before closing.

GET IN TOUCH

- You can **call us** on 0191 416 5454
- Or **email us** at info.washington@wwt.org.uk
- **Visit** www.wwt.org.uk/washington
- **Follow us** Facebook, Twitter @WWTWashington and Instagram @wwtwashington



WWT is the **leading conservation** charity that protects, preserves and promotes **wildlife** and **wetlands**. Come along, **explore**, get close to the **animals**, enjoy **unique experiences** and learn about these **amazing habitats**.

WWT reg charity, Eng & Wales, no. 1030884 and Scotland no. SC039410
Cover photo credit: Alan Hewitt



GET CLOSE TO NATURE

at Washington Wetland Centre

OPEN 364 DAYS OF THE YEAR



"Another packed day of exploring. Lots to do from having a lovely Sunday roast to a relaxing seat gazing through 'window on the Wear'. Plenty of hides to see the birds through. A very enjoyable day out, the otters are wonderful, plenty of things for younger visitors too."

Sonia Walker
Facebook

HAVE A WILD DAY OUT AT WWT WASHINGTON

Plan your adventure at wwt.org.uk/washington

WADER LAKE WONDERS

Binoculars at the ready for easy views of breeding avocets and lapwing, a busy common tern colony and one of the UK's best heronries from our four lake-side hides.



BROWSE OUR GORGEOUS GIFTS

We have some lovely souvenirs and wildlife care products in our shop – and even lovelier staff! Every penny you spend with us in our shop and cafe supports our vital conservation work. For that, we thank you.

REFUEL AND RELAX, WATERSIDE

Hot and cold homemade lunches, freshly-brewed Fairtrade teas and coffees, delicious cakes and panoramic views of native wildlife – *Waterside Café* is the place to meet, eat and be.



FEATHERED FEEDING TIME

With seed in your hand and a gaggle of geese at your feet, there are unforgettable wildlife experiences in *Close Encounters* and *Ganderland*.



FANTASTIC FLAMINGO FLOCK

Our Chilean flamingos display dramatically in summer's haze and look stunning against snowy backdrops. An uplifting sight all year round.

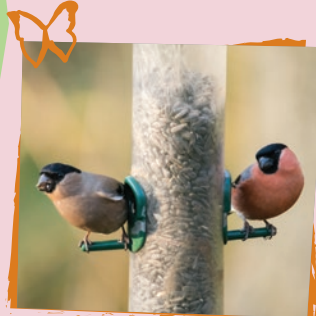
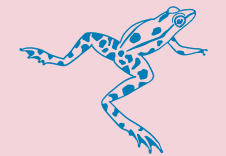


OTTERLY DELIGHTFUL

Introducing Mimi, Musa and their cheeky youngsters. Feeding time is a must see; learn all about this growing otter family and their wild cousins while they enjoy yummy fishy treats.

WONDERFUL WATER

Discover the clever ways in which we use water in our RHS Hampton Court award-winning garden and Water lab.



HAWTHORN WOOD HAVEN

Bullfinch, great spotted woodpeckers and a host of others flit and feed regularly at Hawthorn Wood feeding station, particularly in winter. A magical woodland sanctuary for feathered and human visitors alike.



SPECTACULAR SALINE LAGOON

Enjoy one of the rarest and most unique habitats in the UK from the *Lagoon View Hide*, with impressive panoramic vistas of the River Wear and wildlife highlights including wild otter, kingfisher and roe deer.

SPLASH AND DASH AT PLAYScape

Where the elements of fun and water meet. A climbing frame, waterwheel, scramble net and slide are just some of the stars of our adventure play area. On your marks...race you to the giant tap!



WE'RE BUGGY AND WHEELCHAIR FRIENDLY

FREE PARKING

