

HAVE A WILD DAY OUT AT WWT WASHINGTON

Plan your adventure at
www.wwt.org.uk/washington

WADER LAKE WONDERS

Binoculars at the ready for easy views of breeding avocets and lapwing, a busy common tern colony and one of the UK's best heronries from our four lake-side hides.



BROWSE OUR GORGEOUS GIFTS

We have some lovely souvenirs and wildlife care products in our shop – and even lovelier staff! Every penny you spend with us in our shop and cafe supports our vital conservation work. For that, we thank you.

REFUEL AND RELAX, WATERSIDE

Hot and cold homemade lunches, freshly-brewed Fairtrade teas and coffees, delicious cakes and panoramic views of native wildlife – Waterside Café is the place to meet, eat and be.



FEATHERED FEEDING TIME

With seed in your hand and a gaggle of geese at your feet, there are unforgettable wildlife experiences in Close Encounters and Ganderland.



FANTASTIC FLAMINGO FLOCK

Our Chilean flamingos display dramatically in summer's haze and look stunning against snowy backdrops. An uplifting sight all year round.



OTTERLY DELIGHTFUL

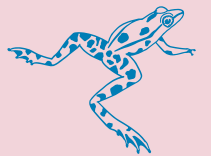
Introducing Mimi and Musa, our Asian short-clawed otters. Feeding time is a must-see; learn all about this characterful species and its wild cousins while they enjoy yummy fishy treats.

GREAT FOR GROUPS



WONDERFUL WATER

Discover the clever ways in which we use water in our RHS Hampton Court award-winning garden and Water lab.



HAWTHORN WOOD HAVEN

Bullfinch, great spotted woodpeckers and a host of others flit and feed regularly at Hawthorn Wood feeding station, particularly in winter. A magical woodland sanctuary for feathered and human visitors alike.



SPECTACULAR SALINE LAGOON

Enjoy one of the rarest and most unique habitats in the UK from the Lagoon View Hide, with impressive panoramic vistas of the River Wear and wildlife highlights including wild otter, kingfisher and roe deer.



SPLASH AND DASH AT PLAYScape

Where the elements of fun and water meet. A climbing frame, waterwheel, scramble net and slide are just some of the stars of our adventure play area. On your marks...race you to the giant tap!

WE'RE BUGGY AND
WHEELCHAIR FRIENDLY

FREE PARKING