

CAERLAVEROCK
WETLAND CENTRE

GROUP VISITS GUIDE



WWT

GREAT FOR GROUPS

Caerlaverock Wetland Centre is a fantastic day out offering groups the chance to get close to amazing wildlife, while enjoying stunning scenery in relaxing and accessible surroundings.

Seamless service

Caerlaverock Wetland Centre has dedicated bookings staff to assist you in planning your unforgettable group day out.

Exclusive group benefits

We have an extensive range of benefits for your group of 12 or more people including:

- Generously discounted group admission rates.
- Free familiarisation trip for the group organiser.
- Free on the day entry for the group organiser.
- Free coach and minibus parking very near to the entrance.
- Free entry for the coach driver.
- Free coach driver refreshments.
- A range of publicity materials to help advertise your trip to our wetland centre to your members.



Accessible for all

Caerlaverock is an accessible site with:

- Disabled pick up and drop off zones and good provision of disabled car parking bays and toilets.
- Wide flat paths and plenty of places to sit and relax.
- Friendly staff who are happy to discuss your needs prior to your visit and help during your visit.
- A range of accessible hides.
- Manual wheelchairs for hire.
- Meet and greet service.
- Fully registered assistance dogs welcome.

Talks, tours and seasonal events

There is something new to see and do every season at Caerlaverock Wetland Centre, add to this a range of talks and tours and your group will have a fascinating time here when they visit.

CAERLAVEROCK WETLAND CENTRE

Overlooking the Solway Firth, our Scottish hidden gem is perfect for your group visit. Enjoy unforgettable spectacles of wintering swans and geese, breeding ospreys and skylarks. Add to this a meandering meadow river walk and more towers, hides and observatories than anywhere else in Scotland and your group won't want to leave.



Not to be missed!

Whoops of joy: thousands of wild whooper swans swoop in from Iceland in October, staying with us until the end of March. Feeding time in our Sir Peter Scott Observatory is one show not to be missed!

Bird's eye views: from the top of the farmhouse tower your group can enjoy a 360 degree view over the reserve and the Solway with the famous barnacle geese feeding in winter.

Watch and wonder: barnacle geese feeding on the merse, waders wheeling on the tide, hen harriers and peregrine falcons hunting over the Solway – Saltcot Merse Observatory is a must for your group.

Take the wet woodland trail: your group can wind their way around our Sir Peter Scott centenary woodland trail, then visit our hides to catch kingfishers and tree sparrows going about their day, and if your group is lucky they may spot the elusive water rail.

Magical meadows and riverbanks: meander through butterfly-filled meadows and along the banks of the Lochar Water – our summer walks are the ultimate rush.

Bird cam: watch live all the latest action from our osprey nest in the summer. Then in the winter, the swans are the stars of our café-side bird cam.



Seasonal highlights and events

- **Summer:** explore our 'Walk on the Wildside' path with skylarks overhead
- **Autumn/winter:** whooper swan and barnacle geese spectacles
- **All year:** wildlife art exhibitions

Cathan Coffee Shop and gift shop

Round off your group's day perfectly with delicious light lunches, snacks, drinks and homemade cakes, from our cosy coffee shop and have a browse in our fabulous gift shop.



Opening times

Visit us 364 days a year – that's every day except Christmas Day.

We're open between 10am – 5pm. Our last admission is one hour before closing.

Coach and minibus parking

We have ample, FREE coach and minibus parking which is adjacent to our centre.

Prices

See insert opposite for our special group admission rates.



To find out more:

W: wwt.org.uk/caerlaverockgroups

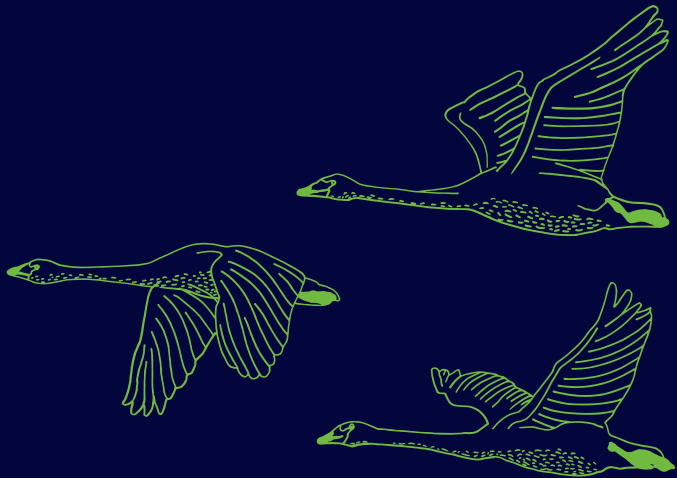
T: 01387 770200

E: groups.caerlaverock@wwt.org.uk

Address: Dumfriesshire DG1 4RS

WHERE WE ARE

Nine miles from Dumfries, Caerlaverock can easily be combined with attractions close by, including Caerlaverock Castle, and makes an ideal stop off to the Southern Uplands.



Connect with us on social media
@WWTCaerlaverock