

FLAP, PADDLE, AND SPLASH YOUR WAY TO AN UNFORGETTABLE DAY OUT!

Enjoy splashing, playing, feeding and getting up-close to some of nature's most incredible wildlife.

We've 100 acres of **adventure** to flutter hearts, including **thousands** of rare birds; must-sees from **Asia, Australia** and **America**; the UK's largest flock of **flamingos**, and oodles of British feathered superstars.

Add to that **critters, crawlies, canoes, two playgrounds**, and a cheeky family of **otters**, and you've got the best fun you can have when you're not actually a bird.

FLY INTO 2019 FUN

Get set for **364 days of discovery**. Whatever your age or interests, we've squeezed enough exciting events, activities and seasonal highlights into the year that there's always something new to see or do.

CELEBRITY DUSTY DUCKS - EASTER HOLIDAYS

Follow the trail to find **14 Giant Dusty Ducks** designed by world famous Aardman studios.

SPRING TO LIFE - MAY HALF TERM

Come and see the cutest, **fluffiest ducklings** in our duckery - you may even see **one hatch**. 'Aaaaahhs' at the ready.

ARCTIC ADVENTURE - SUMMER HOLIDAYS

Have you got what it takes to be an **explorer**? Test your skills at our new Arctic Adventure exhibit.

AUTUMN ACTIVITIES - OCTOBER HALF TERM

Get ready for a jam packed week of autumn inspired events and activities.

SANTA'S COMING TO SLIMBRIDGE

Visit Santa's secret grotto and choose between Breakfast or Afternoon Tea.

NEW FOR 2019!

Inspiring, interactive attractions including; **Arctic Adventure** (Summer 2019), **opening of Scott House** (September 2019) and **Estuary Tower** (November 2019).

Plus, we've got guided walks and talks for all ages and special one-off events to enjoy throughout the year - **Fly over** to www.org.uk/slimbridge-events for details.



EVERYTHING YOU NEED FOR AN UNFORGETTABLE DAY OUT

HOW TO FIND US

- **our address** is WWT Slimbridge Wetland Centre, Slimbridge, Gloucestershire GL2 7BT.
- **By car** - follow the **brown duck signs** along the A38 from Junction 13/14 on the M5.
- **By bike** - use Sustrans route 41.
- **By train** - Cam and Dursley is the closest station (4 miles).

FREE PARKING



WE'RE BUGGY AND WHEELCHAIR FRIENDLY

WHEN WE'RE OPEN

- Open **364 days a year** - that's every day except Christmas Day. We've got plenty to see throughout the year.
- We're open from **9.30am - 5.30pm** (5pm in winter and 3pm on Christmas Eve) and our last admission is one hour before closing.
- The **Canoe Safari** is open March to September. The **Wild Safari** runs at weekends from May and daily during the summer school holidays.

SORRY ASSISTANCE DOGS ONLY ON SITE

GET IN TOUCH

- **Call us** on 01453 891900
- **Email us** at Info.Slimbridge@wwt.org.uk
- **Visit** www.org.uk/slimbridge
- **Follow** @WWTSlimbridge on Facebook, Twitter and Instagram

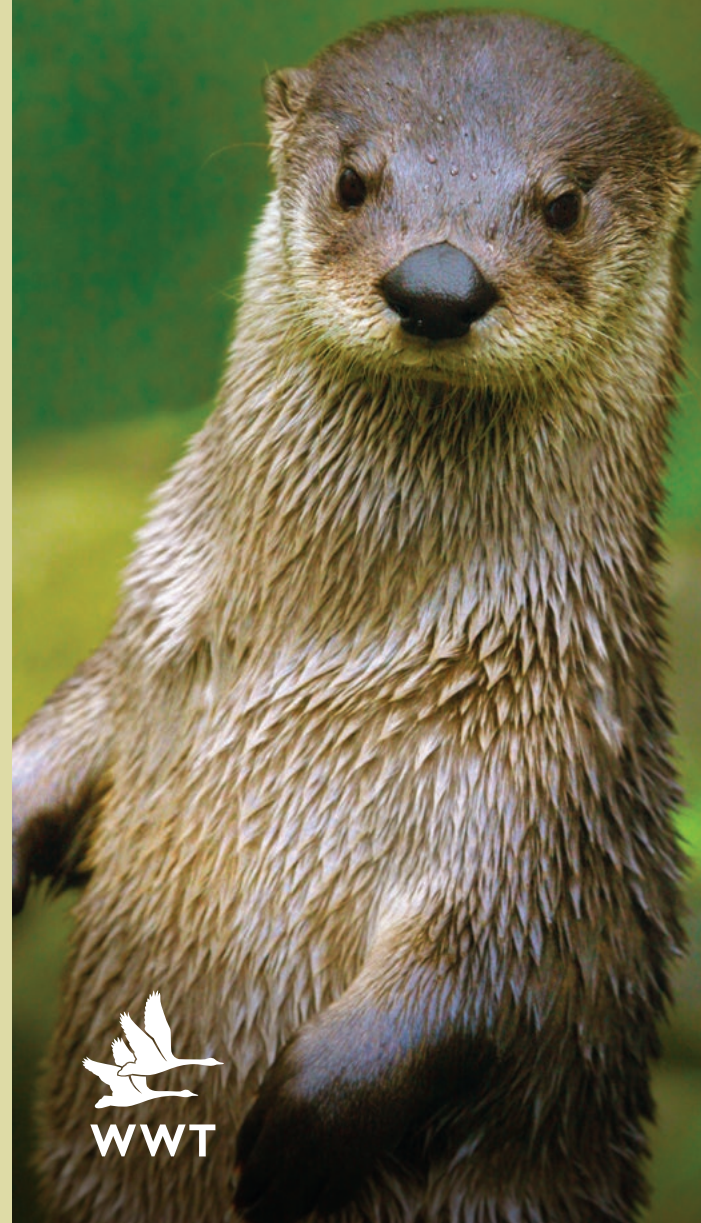


WWT is the leading conservation charity that protects, preserves and promotes **wildlife and wetlands**. Come along, **explore**, get close to the **animals**, enjoy **unique experiences** and learn about these **amazing habitats**.

WWT reg charity, Eng & Wales, no. 1030884 and Scotland no. SC039410



ENJOY A WILD DAY OUT AT SLIMBRIDGE WETLAND CENTRE



"Far more than you expect! This is not just for the serious bird watchers, as one might have thought. The experience appeals to all sorts and has a strong educational element for the younger generation. The range of creatures to see was colourful, plentiful, and wide ranging, The staff were keen on their work, and helpful too."

Greycruiser65
Trip Advisor



DON'T MISS OUR HIGHLIGHTS...

Plan your adventure at www.wwt.org.uk/Slimbridge



NORTH AMERICAN OTTERS

Meet the cheeky **otters** who love to show off for the crowd. Discover all about their lives here and in the wild.



HOP OVER TO TOAD HALL

It's the place to see and be seen if you're an **amphibian!** Check in for **daily up-close encounters** and continue the fun at our **indoor soft play area** – the perfect rainy day retreat!



FEATHERED FEEDING TIME*



With seed in your hand and a group of **ducks** and **geese** at your feet, giggles of delight are inevitable.

SCOTT HOUSE

(opens September 2019)

Take a step back in time as you enter WWT founder, **Sir Peter Scott's former home** set in the 1980's and find out how he made Slimbridge the birthplace of modern conservation.



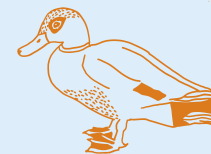
SPLASH INTO WELLY BOOT LAND

Waterwheels, fountains and a free-flowing stream make this **adventure playground** a great place to have fun learning about water! That's not all – our other outdoor playground, Riverlife offers hours of fun!



KINGFISHER KITCHEN

Refuel and unwind in our **restaurant**. A relaxed contemporary space with delicious seasonal food all day long.



FUN WITH OUR FLAMINGOS

Step into our **sunken observatory** for an unbeatable nose-to-beak view of our flamingos. We're tickled pink that we have the **UK's largest flock** just waiting to meet you.



I SPY CANOE SAFARI*

Kingfisher? Water vole? Dragonfly? What will you spot on this kilometre-long **watery treasure trail?**



WILD SAFARIS*

Head onto the **world-famous Slimbridge reserve** for an expertly guided look at the wildlife that flourishes here, plus **outstanding views** of the River Severn estuary.



BIRD'S-EYE VIEWS

Up you go for **360 degrees** of **breath-taking views**, stretching all the way out and over the stunning **River Severn estuary**.



ARCTIC ADVENTURE (opens Summer 2019)

Step into our **Tundra research hut** and see if you've got what it takes to be a **wildlife explorer**.



GIFTS FOR YOU, SUPPORT FOR US

Check out the **stunning range of gifts** available in our Gift Shop and every penny goes towards **vital conservation work**.

*Extra charge for these activities



GREAT FOR GROUPS

WE'RE BUGGY AND WHEELCHAIR FRIENDLY

FREE PARKING