

# Marvellous Minibeasts Answers

## Quiz for children aged 7-11 years

### Round 1: Picture round

All of the following animals were included in this week's Minibeast Cards.

Q Can you name them?



(Painted lady) butterfly



Harvestman



Aphid



Centipede



Millipede

CLUE:  
Centipede's have one pair of legs per body segment whereas millipedes have two.

### Round 2: Classification round

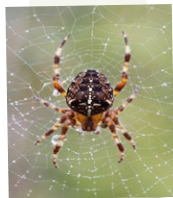
Q For each animal below, say whether it is an INSECT, an ARACHNID, a MOLLUSC a CRUSTACEAN, an ANNELID or a MYRIAPOD.

Centipede



Myriapod

Garden spider



Arachnid

Earthworm



Annelid

Woodlouse



Crustacean

Snail



Mollusc

### Round 3: Herbivore, carnivore or omnivore?

Q For each animal below say whether it is a HERBIVORE, CARNIVORE or OMNIVORE.

Snail



Herbivore

Centipede



Carnivore

Harvestman



Omnivore

Earthworm



Detritivore (also allow herbivore)

Aphid



Herbivore

### Round 4: Miscellaneous round

Q What do you call the case within which a caterpillar changes into a butterfly?

Chrysalis or pupa

Q Which butterfly migrates from Africa to the UK (and vice versa)?

Painted lady

Q Name an animal featured on this week's Minibeast Cards that has a venomous bite or sting.

Centipede, spider or bee

Q Which animal featured on this week's Minibeast Cards breathes through gills?

Woodlouse

Q Which animal featured on this week's Minibeast Cards is an arachnid but not a spider?

Harvestman



@WWTWorldwide



Have fun and do share your score to our social media accounts – We'd love to find out how you got on!